

## Updating procedure for IPS – IPT – IPQ

In order to make the updating of IPS – IPT – IPQ modules, follow the following steps:

### 1. PC connection to IP modules

Configure the IP address of the PC in the same net where the module is. To do so, follow the next steps:

- For Windows XP:

Access to the net configuration pressing *Start menu • Control Panel • Net connections*. Press the right button of the Mouse over the local area connection icon and select *Properties*. In the *General* tab select in *internet protocol* list *TCP/IP* and press *Properties* button. A configuring window of the IP net will appear.

- For Windows Vista:

Access to the net configuration pressing *Start Menu • Control Panel • Net centre and shared resources • Manage net connections*. Press the right button of the Mouse over the local area connection icon and select *Properties*. Select in the *Internet protocol version 4* list (*TCP/IP v4*) and press *Properties* button. A configuring window of the IP net will appear.

Once you have reached the IP configuring window,, modify the following fields:

- *IP address*: It must have a value that has to be in the same net as the IP address by default of the modules: 192.168.4.x (x: any value between 1 and 255)
- *Subnet mask*: Must have the value 255.255.255.0
- *Predetermined gateway*: It must have a value within the same IP net as the one where the module is.. Normally 192.168.4.1

## 2. IP modules updating

In order to proceed to the updating you must have the file with the last available version, which can be downloaded from:

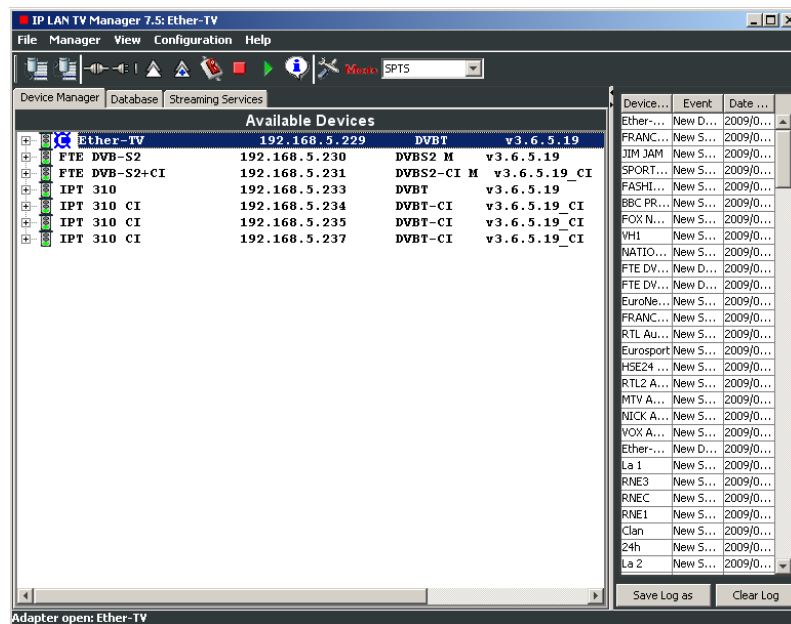
<http://www.ftemaximal.com/ingles/firmware.php>

In this address you will get a .Zip file that you will have to decompress in your PC.

Proceed to open IPlanTVManager program, if the configuration of the IP net is correct, the list of connected modules will appear, if it is not correct you will have to verify again the information of the IP net where your PC is connected.


Next, select the module you wish to update.

**Note:** There is no need of being connected to the module for making the updating.



You can update only one IP module or all IP modules at the same time.

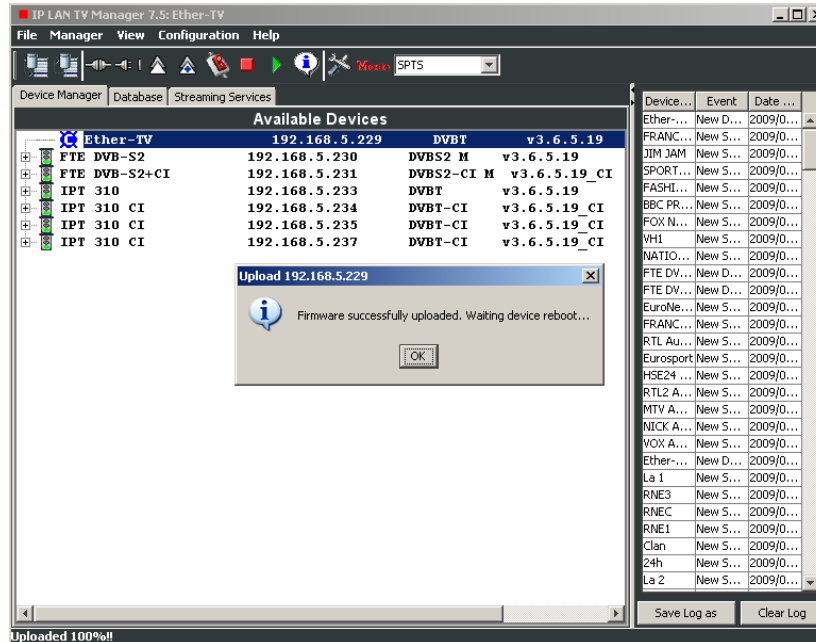
### 2.1. Updating one IP module

Press *Manager* option in task bar and select *Upload* function (icon ).

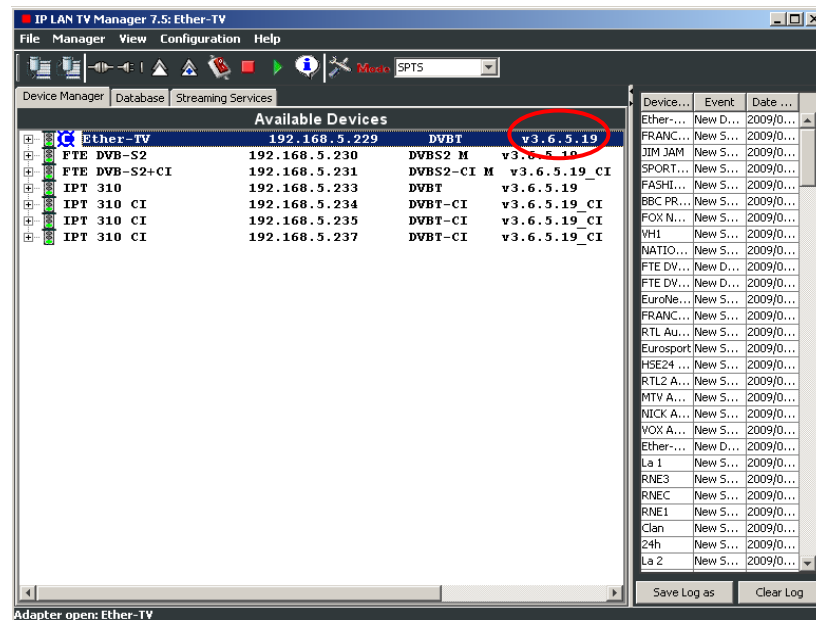




Once the updating will be finished a new window will appear with the following message: "Updating correctly made. The system is rebooting..." Press *OK* and wait until IP module reboots itself automatically.

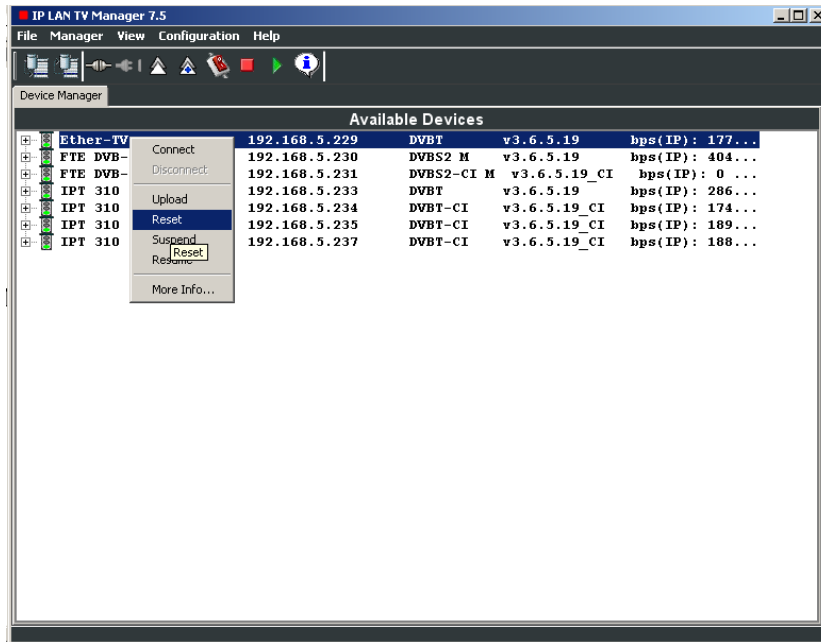


The moment the new IP module appears in the available modules list, verify that the software version has been updated.




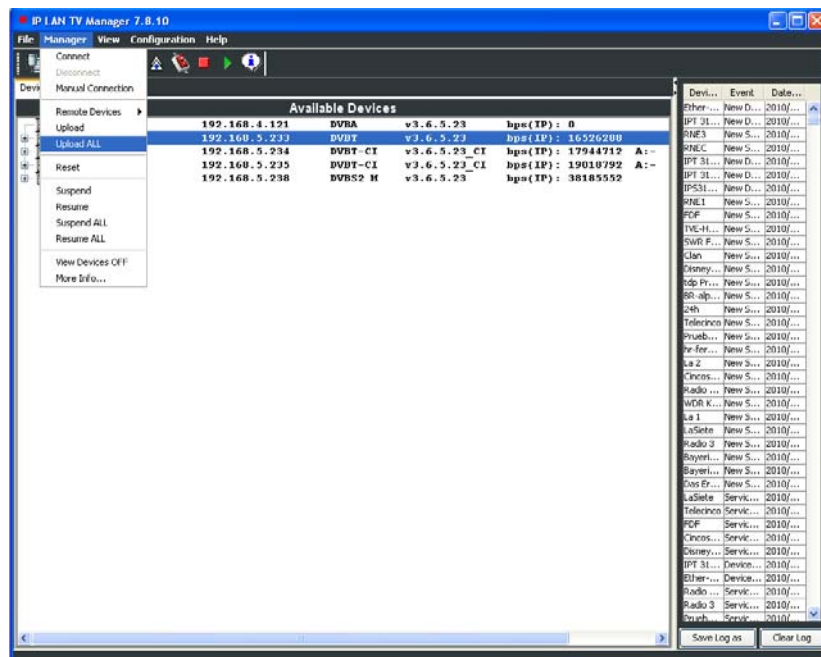
Follow these steps for all the modules you wish to update.

**Note:** If the updating is not correctly made or there is any mistake during the updating process, make a reset to the module before starting the updating process again.  
Press the right button of the mouse over the IP module and select *Reset* option. IP module will reboot and it will be ready to update it again in a few seconds.

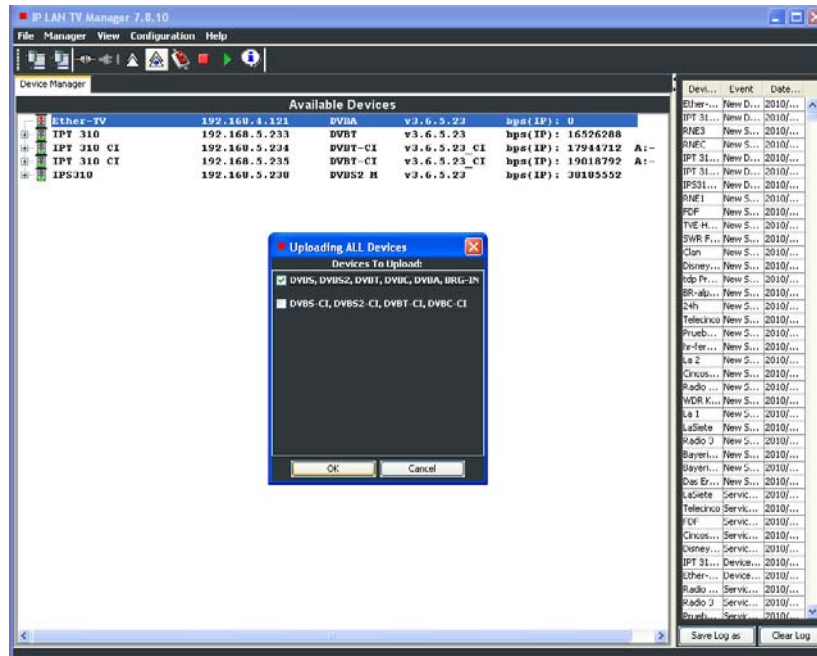


## 2.2. Updating all the IP modules.

Press *Manager* option in task bar and select *Upload ALL* function (icon ).

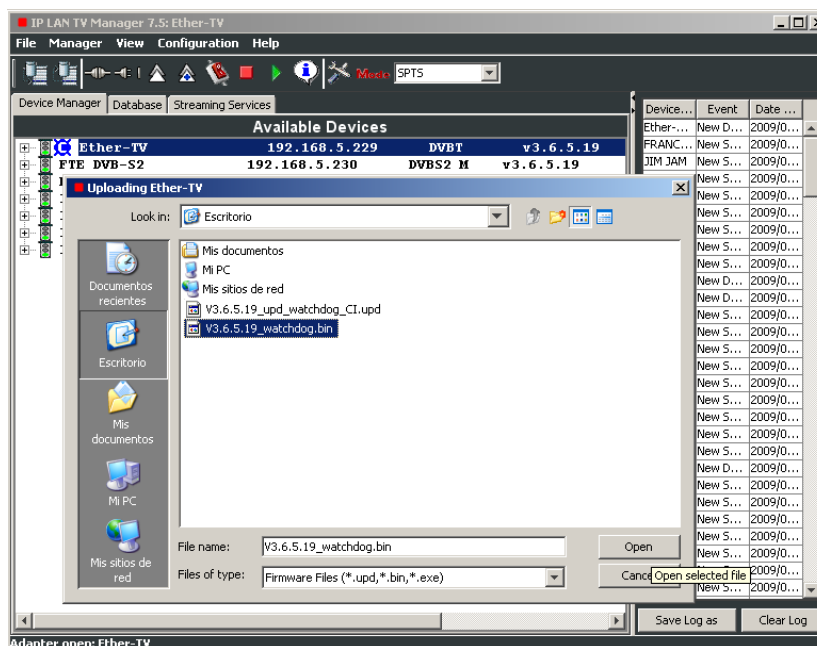


Then, a new window will be opened: here you should select the type of IP module to update. You can select between modules with Common Interface (CI) or modules without CI.

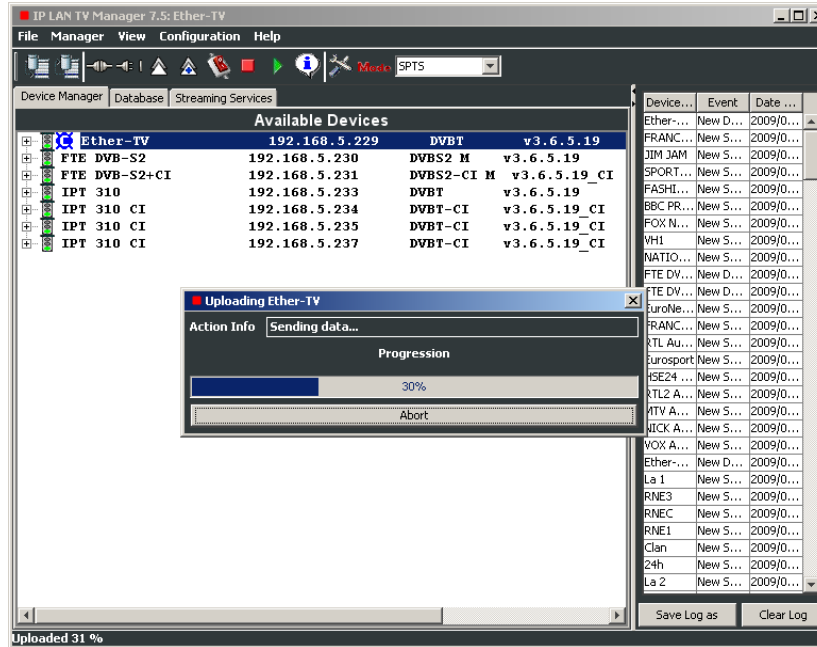


Then, the next window will be opened; here you have to select the updating file for the selected IP module. Once the updating file is selected press *Open* button.

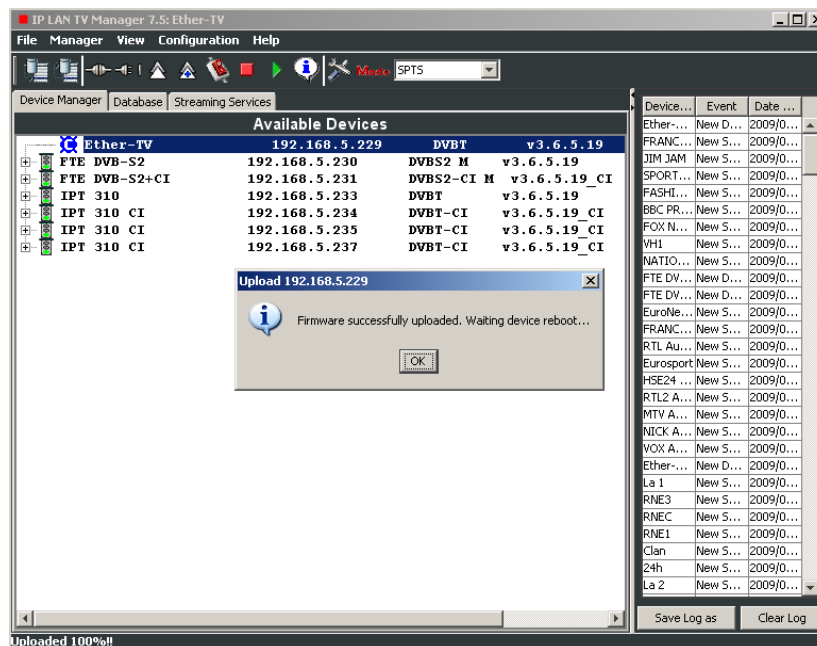
**Note:** IP modules with Common Interface (CI) have a different software version from modules without CI. Select the suitable updating file for each IP module.



Next, the modules will start automatically updating themselves. The updating process will last for seconds.



Once the updating will be finished a new window will appear with the following message: "Updating correctly made. The system is rebooting..." Press *OK* and wait until IP modules reboot themselves automatically.



The moment the new IP modules appears in the available modules list, verify that the software version has been updated, the same way like shown on point 2.1 *Updating one IP module* of this manual.